

MILLENNIUM



HEADSTONES

GIVE YOUR LOVED ONES THE ETERNAL TRIBUTE THEY DESERVE



MANY DIFFERENT STYLES & SIZES

MAKE A PERSONALIZED
HEADSTONE FOR YOUR
LOVED ONES.



MILLENNIUM



HEADSTONES

GIVE YOUR LOVED ONES THE ETERNAL TRIBUTE THEY DESERVE

MANY DIFFERENT STYLES & SIZES

MAKE A PERSONALIZED HEADSTONE FOR YOUR LOVED ONES.



WE MANUFACTURE HI-TECH ENGINEERED HEADSTONES. DURING THE ENTIRE PROCESS WITH PRECISE HAND-CRAFTSMANSHIP, USING ONLY THE BEST QUALITY MATERIALS WE MAKE THE BEST PRODUCT AVAILABLE. USING PATENTED COMPOSITE MATERIAL (PLASMATOR®), WE ARE ABLE TO DELIVER A PRODUCT MANY TIMES SUPERIOR WITH MANY ADVANTAGES, FEATURES AND DESIGNING CHOICES.

WITH MANY YEARS OF DEVELOPMENT, WE WERE ABLE TO MAKE A COMPOSITE MATERIAL THAT CAN WITHSTAND HARSH ENVIRONMENTS, SUCH AS THE SUN, COLD AND WIND. OUR HEADSTONES ARE DESIGNED SO THEY DO NOT CRACK, FADE OR BECOME BRITTLE, MAKING THEM A BETTER CHOICE THAN THE AVERAGE HEADSTONE. THE MATERIAL IS A LAYERED COMBINATION OF FIBERGLASS FOR THE SKIN, UV AND SCRATCH RESISTANT COATING AND THE INTERIOR IS A PATENTED MATERIAL "PLASMATOR" (MIX OF BIOLOGICAL RENEWABLE RESOURCE AND GRANITE COMBINED WITH POLYESTER.) THAT WILL GIVE YOU THE FEEL OF REGULAR STONE.

THIS TECHNOLOGY HAS BEEN ENGINEERED WITH THE BEST KNOWLEDGE FROM THE AVIATION AND MARINE INDUSTRY, MADE SO THAT IT CAN LAST FOR AN ETERNITY.

WE HAVE CURRENTLY TWO LINES OF HEADSTONES MODELS.

THE CLASSIC RECTANGULAR UPRIGHT HEADSTONE IS 45 INCHES IN HEIGHT. THE LARGE BASE IS DESIGNED TO GO INTO THE GROUND 8 INCHES DEEP. THE BASE PROTECTS THE HEADSTONE FROM ANY DAMAGE DURING GARDENING MAINTENANCE.

IN THE CENTER IS A TIFFANY STYLE STAINED GLASS (18 X 24 INCHES), PROTECTED BY TEMPERED GLASS, WITH MANY DIFFERENT DESIGNS TO CHOOSE FROM, OR THE OPTION OF A CUSTOM DESIGN. WE ALSO OFFER THE OPTION OF A UV RESISTANT CUSTOM PICTURE. THE UNIQUE TIFFANY STYLE ART IN THE CENTER WILL LEAVE A PEACEFUL AND SPIRITUAL FEELING WHEN YOU SEE THE SUN SHINING THROUGH IT. THE AVERAGE WEIGHT IS 400 POUNDS (200 KILOS) MAKING IT EASY TO INSTALL AND SHIP THROUGHOUT THE WORLD.

YOU HAVE TWO COLOR CHOICES FOR ALL MODELS: ONYX MOONSTONE AND BLACK ONYX. ONYX MOONSTONE HAS A SPECIAL EFFECT THAT SPARKLES LIKE A PRISM OF DIFFERENT COLORS IN THE SUN. BLACK ONYX IS THE MORE CONSERVATIVE WAY TO GO.

OUR FLAT MARKERS ARE 14 BY 24 INCHES LONG, ALSO WITH TIFFANY STYLE STAINED GLASS 12 INCHES IN DIAMETER OR THE CHOICE A CUSTOM PICTURE, AND THE AVERAGE WEIGHT IS 60 POUNDS (30 KILOS). ALL OUR HEADSTONES COME WITH AN ADDITIONAL SERVICE, THAT INTEGRATES QR CODES WHICH POINT TO YOUR PERSONAL MEMORIAL PROFILE AT WWW.UEULOGY.COM



GIVE YOUR LOVED ONES THE ETERNAL TRIBUTE THEY DESERVE

OUR HEADSTONES ARE ENGINEERED TO LAST MIN 150-500 YEARS AND COME WITH THE ETERNITY WARRANTY. WE CAN HELP YOU CUSTOMIZE THE HEADSTONE FOR YOUR PERSONAL AND UNIQUE DESIGN MEMORIAL. OUR UNIQUE AND CREATIVE DESIGN MAKE US THE FUTURE OF INNOVATIONS.

THE COLOR OF DECORATIVE DETAILS, LIKE THE TRIM, OR THE ENGRAVING CAN BE CUSTOMIZED. AVAILABLE CHOICES ARE GOLD, SILVER OR BLACK. ALSO THE COLOR OF THE HEADSTONE IS IN WHITE AVAILABLE, WITH SOON MORE CHOICES TO COME.

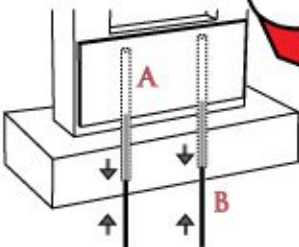
MATERIAL LAYERS

PATENTED FILLING MATERIAL, PLASMACOR, BASED ON RENEWABLE RESOURCE.

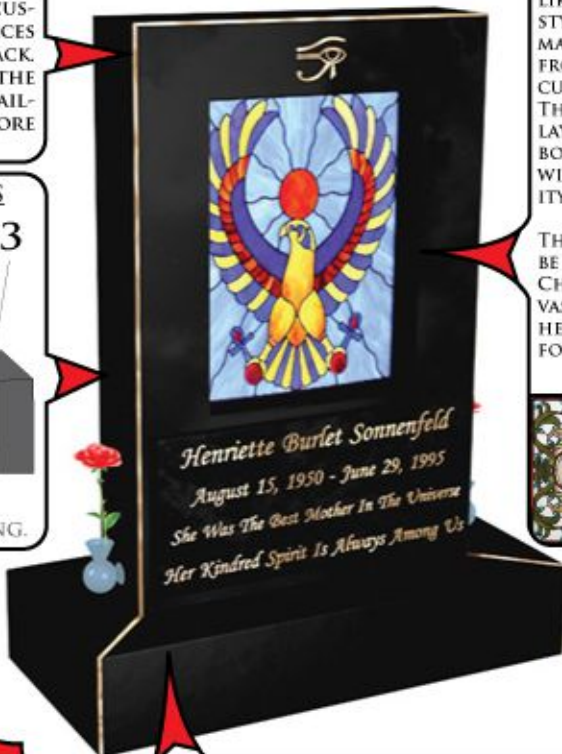
2
COLORED FIBER-GLASS LAYER, FOR STRENGTH, AND IMPACT.

1
UV, SCRATCH, FADE, CRACK, AND BRITTLE RESISTANT CLEAR COATING.

HEADSTONE BASE, INSTALLED BELOW GROUND, PROTECTS DURING GARDENING MAINTENANCE.



SIMPLE INSTALLATION, WITH TWO 5-7 FEET LONG METAL RODS (B) INSERTED INTO THE GROUND, AND THEN CONNECTED TO TUBES (A) INSIDE THE HEADSTONE, BY SLIDING IT TOGETHER. (INSTALLATION INSTRUCTIONS PROVIDED.) AVERAGE WEIGHT IS 400 POUNDS (200 KILO).



CENTER OPENING FOR FEATURES LIKE HANDCRAFTED TIFFANY STYLE STAINED GLASS, WITH MANY DESIGNS TO CHOOSE FROM. ALSO DO WE OFFER A CUSTOM UV RESISTANT PICTURE. THE GLASS IS PROTECTED BY A LAYER OF TEMPERED GLASS ON BOTH SIDES, AND SEALED. THIS WILL PROTECT IT FROM HUMIDITY AND IMPACT.

THE CENTER GLASS FEATURE CAN BE REPLACED FOR REPAIRS OR CHANGES. WE ALSO INCLUDE A VASE THAT IS ATTACHED TO THE HEADSTONE, TO PUT FLOWERS FOR YOUR BELOVED ONES.



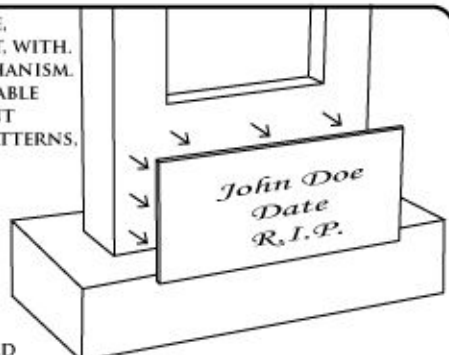
DETACHABLE NAMEPLATE, SECURED AGAINST THEFT, WITH A SIMPLE LOCKING MECHANISM. ENGRAVING WITH RESIZABLE FONTS, STYLES, DIFFERENT LAYOUTS, CHOICES OF PATTERNS, AND MORE.

⊕ FEATURES LIKE:

- STYLISH DESIGNS
- QR CODE PROFILES FOR VRSOULZ.COM
- CHANGES, UPGRADES
- COMPANION

COLOR CHOICES:

- BRONZE / SILVER / GOLD
- BLACK & WHITE / MOONSTONE
- + AND MORE TO COME.





GIVE YOUR LOVED ONES THE ETERNAL TRIBUTE THEY DESERVE

OUR HEADSTONES ARE ENGINEERED TO LAST AN ETERNITY AND COME WITH A ETERNITY WARRANTY. WE CAN HELP YOU CUSTOMIZE THE HEADSTONE FOR YOUR PERSONAL AND UNIQUE MEMORIAL DESIGN. OUR UNIQUE AND CREATIVE DESIGNS MAKE US THE FUTURE OF INNOVATIONS.

FEATURES INCLUDE HANDCRAFTED TIFFANY STYLE STAINED GLASS, OR A CUSTOM UV RESISTANT PICTURE, WHICH HAVE A REFLECTIVE BACKGROUND FOR BETTER VIEWING. PROTECTED AGAINST IMPACT BY A LAYER OF TEMPERED GLASS ON BOTH SIDES, AND SEALED FROM HUMIDITY. ALSO CAN BE REPLACED FOR REPAIRS OR CHANGES.



MATERIAL LAYERS

PATENTED FILLING MATERIAL, PLASMACOR®, BASED ON RENEWABLE RESOURCE.

COLOR FIBER-GLASS LAYER, FOR STRENGTH, AND IMPACT.

UV, SCRATCH, FADE, CRACK, AND BRITTLE RESISTANT CLEAR COATING.



THE FLAT MARKER HAS A HIGHLY CUSTOMIZABLE NAME PLATE. THE ENGRAVING IS DONE WITH RESIZABLE FONTS, STYLES, DIFFERENT LAYOUTS, CHOICES OF PATTERNS, AND MORE. ALL ARE IN-EXPENSIVE OPTIONS. (IT IS POSSIBLE TO REMOVE THE NAMEPLATE)

⊕FEATURES LIKE:

- STYLISH DESIGNS
- CHANGES
- A VASE FOR FLOWERS
- QR CODE PROFILES FOR VRSOULZ.COM

COLOR CHOICES:

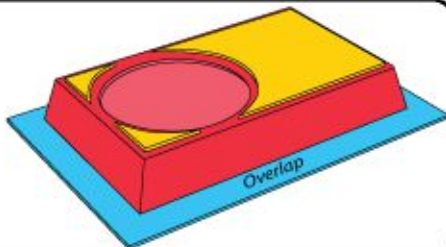
- BRONZE / SILVER / GOLD



INSTALLATION IS EASY WITH ONLY 60 POUNDS, (30 KILOS) AND STRAIGHT-FORWARD, WITH MINIMAL STEPS BY SIMPLY EXCAVATING AN OPENING IN THE GROUND, 28 1/2" BY 18 1/2" AND 4" DEEP.

THEN LOWERING THE FLAT MARKER INTO THE GROUND, AND PUT SOIL AROUND THE OVERLAP. (THE PERMANENT INSTALLATION USES CONCRETE INSTEAD OF SOIL) AND THE OPTIONAL RAISED VERSION HAS SIMILAR STEPS.

THE OVERLAP IS DESIGNED TO SECURE THE FLAT MARKER INTO THE GROUND. (INSTALLATION INSTRUCTIONS ARE PROVIDED.)






OUR HEADSTONE ADVANTAGES

-  LIGHTWEIGHT PATENTED COMPOSITE MATERIAL

PATENTED COMPOSITE MATERIAL (PLASMATOR®) THAT IS EXTREMELY LIGHTWEIGHT, WHICH IS AN ADVANTAGE LIKE IN-EXPENSIVE SHIPPING, AND EASY INSTALLATION.

-  AFFORDABLE, WITH MANY OPTIONS.

OUR HEADSTONES ARE MORE AFFORDABLE THAN REGULAR ONES, WITH MORE FEATURES AND ADVANTAGES.

-  EXTREMELY DURABLE

THE PATENTED COMPOSITE MATERIAL (PLASMATOR®) WAS DEVELOPED WITH TECHNOLOGY FROM THE AVIATION, BOATING, SPACE INDUSTRY TO WITHSTAND EXTREME CONDITIONS. OUR PRODUCT WILL NOT WITHER, CRACK, FADE OR BECOME BRITTLE.

-  NO MAINTENANCE NEEDED

OUR HEADSTONES WILL STAY YEAR AROUND BEAUTIFUL, NEEDS VIRTUALLY NO MAINTENANCE, LIKE REMOVAL OF MILDEW. FURTHERMORE THEY ARE INSTALLED SOLID IN THE GROUND AND WILL NOT EVER SHIFT, LEAN OR TILT.

-  HI-TECH HEADSTONES

HEADSTONES ARE MADE FROM HI-TECH PATENTED COMPOSITE MATERIALS (PLASMATOR®), USING A COMPOSITE MATERIAL WITH FIBERGLASS, AND GRANITE POWDER, WHICH ALLOWS ENDLESS POSSIBILITIES FOR MORE INNOVATIVE OPTIONS. WE HAVE FEATURES LIKE QR CODES, FLOWER VASE, AND INTEND TO BRING YOU MORE.

-  VIRTUALLY NO POLLUTION

OUR MANUFACTURING METHODS CREATE VIRTUALLY NO POLLUTION, WHILE REGULAR MANUFACTURING OF HEADSTONES CREATES A LOT OF POLLUTION, AND A HIGH AMOUNT OF CO2 EMISSION.

-  SEPARATED REMOVE-ABLE NAME PLATE

REMOVE-ABLE NAME PLATE IS ANOTHER FEATURE WHICH ALLOWS MANY DIFFERENT DESIGN POSSIBILITIES, AND STYLES, ALSO ALLOWS FOR EASY CHANGES.

-  RENEWABLE RESOURCE

OUR HEADSTONE USES A PATENTED MATERIAL, PLASMATOR® THAT USES 90% RENEWABLE RESOURCES, AND INCLUDES GRANITE IN POWDER FORM.

-  QUICK ORDER PROCESSING

WE ARE CAPABLE OF PROCESSING AN ORDER FOR A HEADSTONE WITHIN A SHORT AMOUNT OF TIME, USUALLY ABOUT IN 3-4 WEEKS, READY AND DELIVERABLE.

-  MANUFACTURED IN THE USA

WE MANUFACTURE OUR PRODUCTS ENTIRELY DOMESTICALLY TO MAKE SURE IT REACHES OUR HIGH STANDARD OF QUALITY, AND CRAFTSMANSHIP, WITH HONOR AND INTEGRITY SO THAT WE ARE CAPABLE OF GIVING IT OUR FOREVER WARRANTY.

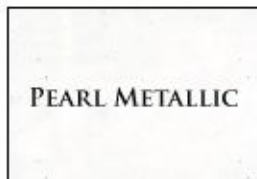


GIVE YOUR LOVED ONES THE ETERNAL TRIBUTE THEY DESERVE

THE COLOR CHOICES



ONYX METALLIC



PEARL METALLIC



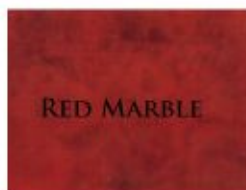
GOLD METALLIC



SILVER METALLIC

ALL COLORS CAN BE DIFFERENT SHADES, MIXED WITH METALLIC GLITTER AND APPLY TO BASE MEMORIAL COLOR, ENGRAVING, & ACCESSORIES EX VASES OR OTHER, FOR NO EXTRA FEE.

THE MEMORIAL BASE COLOR GOLD AND SILVER ARE AVAILABLE IN THREE VARIANTS, REGULAR, METALLIC AND GILDED, AND ALL HAVE DIFFERENT ADDITIONAL PRICING.



RED MARBLE



BLUE MARBLE



WHITE MARBLE

TEXTURES ARE LIMITED TO THE MEMORIAL SURFACE AND ARE PRICED DIFFERENT.



GIVE YOUR LOVED ONES THE ETERNAL TRIBUTE THEY DESERVE

2 INCH RAISED INSTALLATION



4"
THICK

14" WIDE ——— LENGTH ———> 30"



FULL LOWERED INSTALLATION

Style: Flat Marker

Texture: Black Moonstone Onyx, or Black Onyx
Many different color or texture choices available

Stained Glass: Tiffany-Style Glass or Custom Picture

Dimension: **Flat Marker:** 24" Long X 14" Wide X 4" High
Stained Glass: 12" Diameter

Options: Raised Flat Marker with Base

Weight: 60 Pounds / 30 Kilo

Price (MSRP): **\$1450.00** Includes Eternity Warranty.
+tax where required



ALL STAINED-GLASS ARE HANDMADE, OF HIGH QUALITY, WITH A CUSTOM DESIGN OR A UV RESISTANT CUSTOM PICTURE. THE STAINED-GLASS ARE PROTECTED AND SEALED WITHIN TEMPERED GLASS.

WE ALSO INCLUDE A FLOWER VASE ATTACHED TO THE MARKER, AND QR CODE DIRECTING TO A PROFILE OF YOUR BELOVED WITH WWW.VRSOULZ.COM.



OPTIONAL STYLE. FULL RAISED

OPTIONAL YOU CAN REQUEST A RAISED FLAT MARKER, WHICH IS 4 INCHES ABOVE THE GROUND. IN THIS STYLE THE FLAT MARKER HAS A NICE BASE WHICH IS INSTALLED WITH THE GROUND LEVEL.

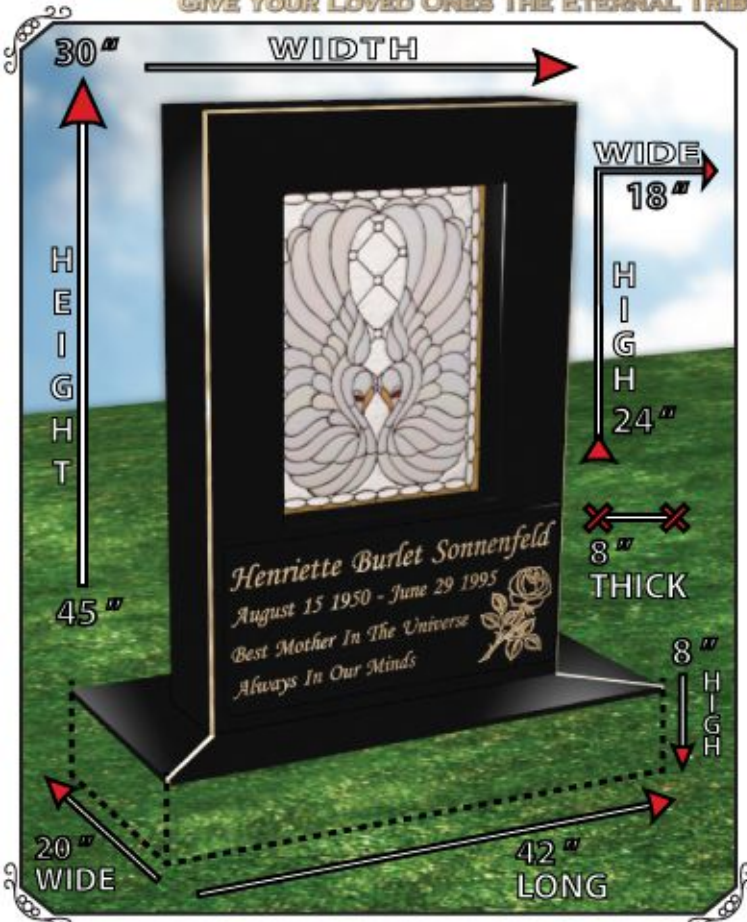
Disclaimer: Check with your local cemetery for the opportunity to place this monument on your grave site and for any extra fees for placement, installation, inspections fees, or perpetual care fees which are not part of the purchase price of the monument.

MILLENNIUM



HEADSTONES

GIVE YOUR LOVED ONES THE ETERNAL TRIBUTE THEY DESERVE



STAINED-GLASS ARE HANDMADE, OF HIGH QUALITY, WITH A CUSTOM DESIGN, OR UV RESISTANT PICTURE. THE GLASS IS PROTECTED AND SEALED WITHIN TEMPERED GLASS. THE HEADSTONE COMES WITH A FLOWER VASE, AND A QR CODE THAT DIRECTS TO A MEMORIAL PLATFORM AT WWW.VRSOULZ.COM



OPTIONAL BACK NAMEPLATE, WITH ADDITIONAL ENGRAVING CHOICES, AND DESIGNS, WHICH IS AN EXTRA OPTION FOR THE PRICE OF \$100+

- Style:** Upright Headstone
- Texture:** Black Moonstone Onyx, Black Onyx
Many different color or texture choices available
- Stained Glass:** Tiffany-Style Glass or Custom Picture
- Dimension:** **Top:** 45" High X 30" Width X 8" Thick
Base: 8" High X 42" Long X 20" Wide
- Options:** Long Nameplate/Short Name Plate/Back Nameplate
- Weight:** 400 Pounds / 200 Kilos
- Price (MSRP):** **\$3450.00** Includes Eternity Warranty.
+tax where required

Disclaimer: Check with your local cemetery for the opportunity to place this monument on your grave site and for any extra fees for placement, installation, inspections fees, or perpetual care fees which are not part of the purchase price of the monument.



GIVE YOUR LOVED ONES THE ETERNAL TRIBUTE THEY DESERVE



WE CURRENTLY HAVE TWO TYPES, UPRIGHT HEADSTONES, AND FLATMARKERS, AS WE CONTINUE TO EXPAND WE WILL OFFER MORE DESIGNS. WE OFFER CURRENTLY CUSTOM DESIGNED STAINED GLASS, AND OR PICTURES THAT ARE UV RESISTANT, WE WILL EXPAND THIS OPTION TO INCLUDE LCD SCREENS. INCLUDED IS A FLOWER VASE, AND OPTIONS FOR ADDITIONAL CUSTOMIZATION. LIKE A QR CODE THAT LINKS TO VRSOULZ.COM FOR MANY ADDITIONAL FEATURES WE PLANNED. WE ARE ALWAYS DEDICATED TO DELIVER THE BEST.





GIVE YOUR LOVED ONES THE ETERNAL TRIBUTE THEY DESERVE

We have planned more designs, like arched Headstones, rounded Tiffany-Style-Glass or different flat markers, all with different texture options, these are just a few examples of new designs that we will eventually introduce. We will also have more extra options to choose from, different flower vases, solar powered lights for the center glass, build in LCD displays with interactive software, and much more.

